



THE HOUND DOG REGATTA

SATURDAY, AUGUST 10TH, 2019

ORGANIZING AUTHORITY: GRAND TRAVERSE YACHT CLUB

SAILING INSTRUCTIONS

1 — Rules —

1.1 - The regatta will be governed by the rules as defined in The Racing Rules of Sailing (RRS), PHRF and one design class rules except as modified by these Sailing Instructions.

1.2 - The following rules are changed -

- a) Race Signal AP is changed in SI 4.2.
- b) RRS App A is changed in SI 10.2 and in SI 16.

2 — Notices to Competitors — will be posted on the Official Notice Board located in the GTYC foyer.

3 — Changes To Sailing Instructions — will be posted ninety (60) minutes prior to the first warning signal on the day it will take effect

4 — Signals Made Ashore —

4.1 - Signals made ashore will be displayed from the GTYC flagstaff and broadcast on VHF channel 69.

4.2 - When flag AP is displayed ashore, '1 minute' is replaced with 'not less than thirty (30) minutes' in Race Signal AP. This changes Race Signal AP

5 — Schedule of Races —

Saturday, August 10

0930 hrs, Competitor Meeting, GTYC

1030 hrs, Race #1 Grand Touring 1st Warning Signal

Up to two additional races may be sailed for Grand Touring Classes

1100 hrs, Race #1 Melges & PHRF A 1st Warning Signal

Up to four additional races may be sailed for Melges & PHRF A Classes

1500 hrs, No Races Started after 1500 hrs

1800 hrs, Awards

Sunday, August 11

1030 hrs, Melges Warning Signal

Up to three additional races may be sailed for Melges & PHRF A Classes

1330 hrs, No Races Started after 1330

1500 hrs, Awards

6 — Class Flags

Melges Class: White

PHRF A: Red

GT Spinnaker Class: Blue

GT JAM Class: Green

7 — Racing Area — will be West Grand Traverse Bay. (see Attachments A)

8 — The Courses —

8.1 — The Grand Touring Class courses will be a combination of marks, displayed RC on the signal boat with the direction of mark rounding indicated. The course will be broadcast on VHF 69 and texted to the competitors as a courtesy (Grand Touring Only).

8.2 — The Melges 24 & PHRF A courses will be windward/leeward courses that will be indicated by the number of individual legs.

8.2.1 — The Melges 24 & PHRF A windward mark will have an offset rounding mark.

8.2.2 — The Melges 24 & PHRF A leeward marks will be a leeward gate

9 — Grand Touring Marks —

9.1 - Primary marks will be the GTYC Club Marks (R, Y, & B) plus temporary marks at “H”, “L”, & “P”, & government marks R8 & C7

9.2 — **Race Marks** (for approximate locations see Page 4)

“X” — Starting Line pin & non-fixed mark (orange inflatable cylinder)

“BP” — Bryant Park club mark (white/orange pin)

“SP” — Sandpit club mark (white/orange pin)

“YC” — Yacht Club club mark (white/orange pin)

“R8” — Red 8 government mark

“HD” — Hound Dog (white pin)

“C” — C7 green government mark

“PK” — Pathfinder (orange/pink ball) approx .75 nm north of “R8” on west half of bay

“L” — Lookout Point (green inflatable tetrahedron mark approx. .75 nm north of “SP” on east shore of bay)

10 — Melges & PHRF A Marks —

- “X” — Starting Line pin - orange inflatable cylinder
- Orange Tetrahedron as Windward Mark
- Red Ball as offset mark
- Orange Tetrahedrons (2) as the leeward gate
- Yellow cylinder can as finish pin

11 — The Start

11.1 — The starting line will be between a staff displaying an orange flag on the RC signal boat at the starboard end and the “X” cylinder at the port end.

11.2 — A boat starting later than four (4) minutes after her starting signal will be scored Did Not Start (DNS). This changes RRS A4.1

11.3 — Boats whose warning signal has not been made shall avoid the starting area while others are in sequence.

12 — Recalls — Individual Recalls will be signaled in accordance with RRS 29.2. The RC intends to make an attempt to hail OCS competitors on VHF channel 68. The following are not grounds for redress: failure of the RC to hail any or all boats; failure of the RC to accurately hail one or more boats; failure of a boat to hear its hail; timeliness of the hail; or the order of boats within the hail.

13 — Change of the Next Leg of the Course — To change the next leg of the course, the RC will lay a new mark and remove the original as soon as practicable. When in a subsequent change a new mark is replaced, it will be replaced by an original mark.

14 — The Finish

13.1 - The finishing line will be between a staff displaying a blue shape on a RC Boat at the he course side of the designated finish mark.

13.2 - In the absence of an RC boat at the finish, boats shall take their own times when their bow crosses a line perpendicular to the last leg and within 50 yds of the finish mark and report this time on the Finish Time Sheets attached. This may be when the committee boat is not on station, or in the case of a shortened course.

14 — Time Limits

14.1 - For Grand Touring Races, except one including C7, the time limit will be 120 minutes.

14.2 - For Melges 24 & PHRF A Races, except one including C7, the time limit will be 90 minutes.

14.3 - For Melges 24 & PHRF A Races the time limit to the first windward mark will 30 minutes. If no boat is around the mark, the race will be abandoned.

14.4 - For a course C7 including the time limit will be 2.5 hours.

14.5 - For Grand Touring Classes any boat failing to finish within thirty (30) minutes after the first boat in their section sails the course and finishes will be scored Time Limit Expired (TLE). For course including C7 this time will be forty (40) minutes.

14.6 - For Melges 24 & PHRF A Classes any boat failing to finish within ten (10) minutes after the first boat in their section sails the course and finishes will be scored Time Limit Expired (TLE)

15 — Protests And Requests For Redress

15.1 — Protests shall be filed within the protest time limit at GTYC where forms will be available.

15.2 — The protest time limit will be 60 minutes after the RC Signal Boat docks. This time will be posted on the Official Notice Board and will be announced on VHF Channel 68.

15.3 — Notices will be posted within thirty (30) minutes of the protest time limit to inform competitors of hearings in which they are parties or named as witnesses. Location of hearings TBD.

16 – Scoring

16.1 – All races will be scored using PHRF Time On Time Handicaps. Entrants that do not have a valid LMPHRF certificate will be assigned a rating.

16.2 – One race must be completed to constitute a series.

16.3 – A boat's series score will be the total of her race scores (no throwout). This changes RRS App A.

16.4 – Any boat that does not finish (DNF) or retires after finishing (RTD) shall be scored one more point than the last place finisher in that race. This changes RRS App A 4.2.

17 – Prizes – will be awarded to first, second, & third place overall for each fleet.

18 – Safety - Competitors who withdraw from a race shall notify the RC over VHF Channel

18.1 – The primary communication for all medical emergencies is 911

19 - Radio Communication – A boat shall neither make radio transmissions while racing nor receive radio communications not available to all boats. VHF Channel 69 will be monitored by the RC and they will only respond to competitors who identify themselves.

20 - Disclaimer of Liability

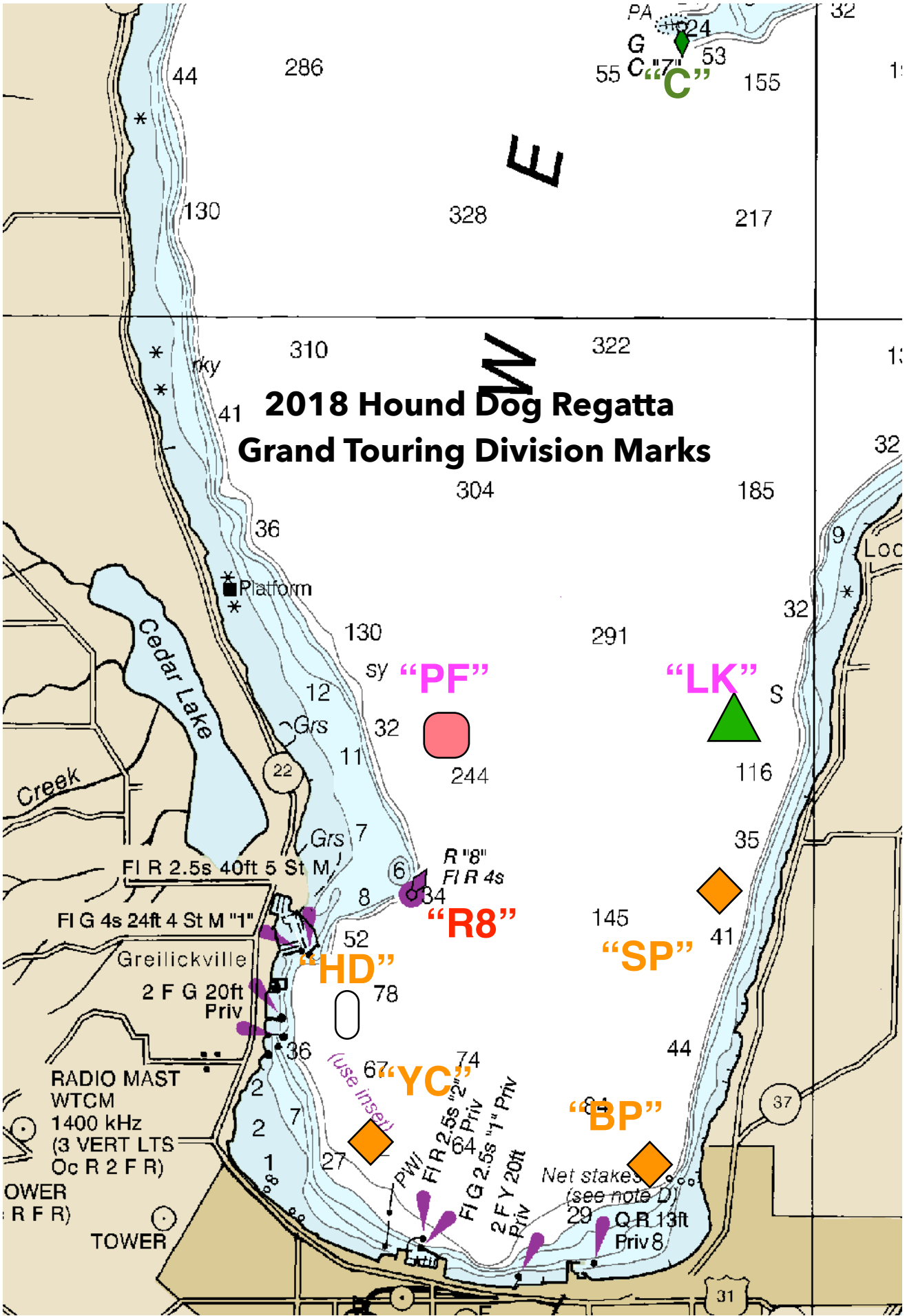
20.1 - Sailing is an activity that has an inherent risk of damage and injury. Competitors in this event are participating entirely at their own risk. See RRS 4, Decision to Race. The race organizers (organizing authority, race committee, protest committee, host club, host club employees or volunteers, sponsors, or any other organization or official) will not be responsible for damage to any boat or other property or the injury to any competitor, including death, sustained as a result of participation in this event. By participating in this event, each competitor agrees to release the race organizers from any and all liability associated with such competitor's participation in this event to the fullest extent permitted by law.

20.2 - The safety of a boat and its crew is the sole and inescapable responsibility of the Skipper who shall ensure that the boat is fully sound, thoroughly seaworthy, and manned by an experienced and physically able crew. Neither the establishment of regulations or inspection of a boat in any way limits or reduces the complete and unlimited responsibility of the Skipper.

20.3 - The Organizing Authority, Grand Traverse Yacht Club, their employees and volunteers do not accept responsibility for the loss of life or injury to participants or others, or for the loss or damage to any vessel in any way or from any cause during or relating to this series.

20.4 - The Skipper shall be responsible for the conduct of his crew. In the event of a serious breach of conduct, the destruction of property or the failure to comply with a reasonable request of any Race Officer or Committee Member, the Skipper will be responsible for all damages and the boat may be subject to protest, which may include disqualification from the series.

21 - INSURANCE - Each participating boat shall be insured with valid, third party liability insurance with a minimum coverage of \$300,000 to compete in the 2019 GTYC Annual Regatta.



2019 Melges 24 & PHRF A Series Sailing Instructions Attachment A

